

iVMS-4200 Client Software

Quick Start Guide

V1.02

Table of Contents

Table of Contents.....	2
1. Overview	3
2. Installing the Software	3
3 User Registration.....	5
4. Quick Start.....	6
User Login	6
Control Panel and Main Menu Bar Introduction.....	7
Wizard for Importing Device	10
Starting Live View	14
Local Playback.....	16
Playback of Local Stored Files.....	16
Instant Playback	18
5. Exit System	18

1. Overview


This Guide provides basic instructions on how to install and operate the software, such as the operation of live view, record images and play back the recorded video. For detailed instructions on using the software, please refer to the iVMS-4200 User Manual.

2. Installing the Software

Download the iVMS-4200 software on the website.

Follow the wizard to install the software.

Steps:

1. Double click the program file  to enter the following InstallShield Wizard as shown below:

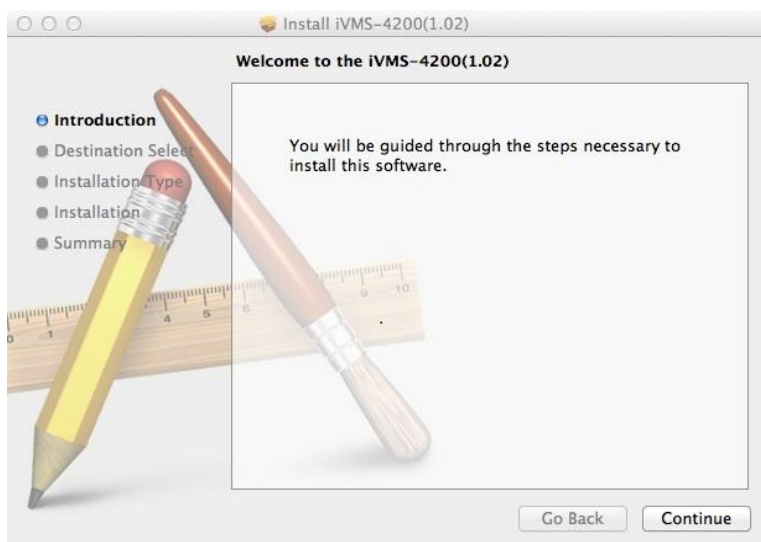


Figure 2.1 Welcome to InstallShield Wizard

2. Click “Continue” to start to install the InstallShield Wizard. Select the destination directory for installation, and then click “Continue” to continue the installation.



Figure 2.2 Select Destination

3. Choose the installation type of the software. You can change the location of the software by clicking “Change Install Location”.

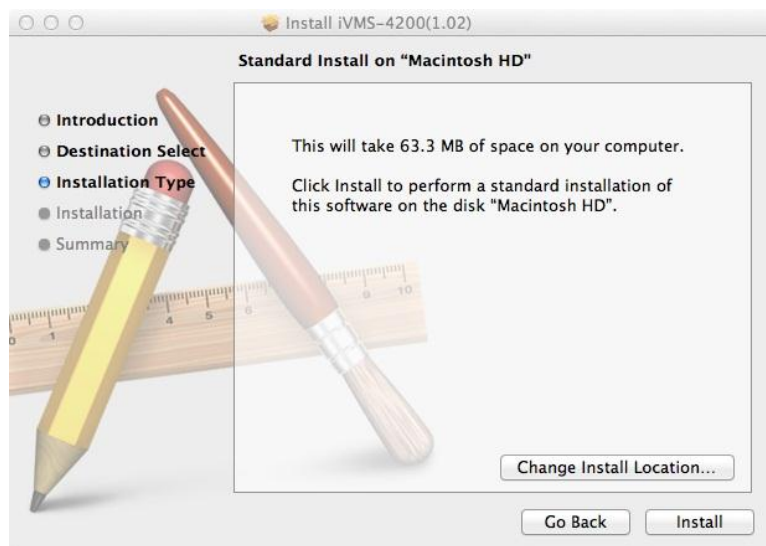


Figure 2.3 Installation Type

4. After the installing progress is completed successfully, click “Close” to finish the installation.

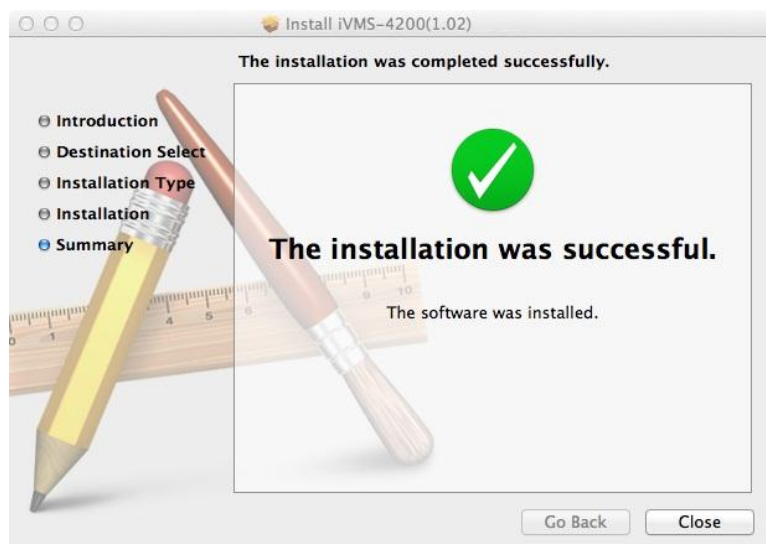


Figure 2.4 Finish the Installation

3 User Registration

For the first time to use the iVMS-4200 software, you need to register a super user for login.

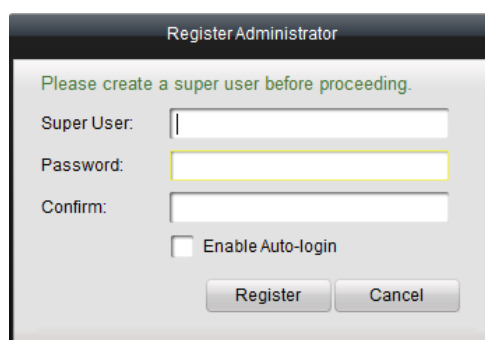


Figure 3. 1 Register Administrator

Enter the super user name, password and confirm the password in the dialog box and click **Register**. Then, you can log in as the super user.

Note: Enter, Space, and TAB keys are invalid for the user name and password. The password cannot be empty, and it should not be less than six characters and can't be copied and pasted.

4. Quick Start

User Login

When you open the iVMS-4200 software after registration, the login dialog box pops up, shown in the following figure:

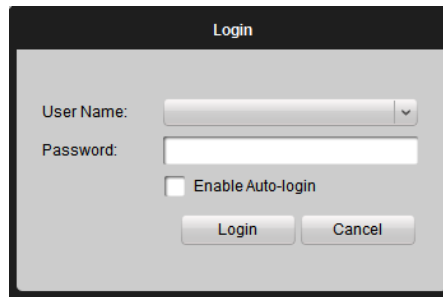


Figure 4.1 Log in

Input the user name and password, and then click **Login**.

Check the ☐ Enable Auto-login checkbox to enable auto-login, and then the user name and password are not needed for the login next time.

Control Panel and Main Menu Bar Introduction

The main control panel of the iVMS-4200 is shown in the following figure:

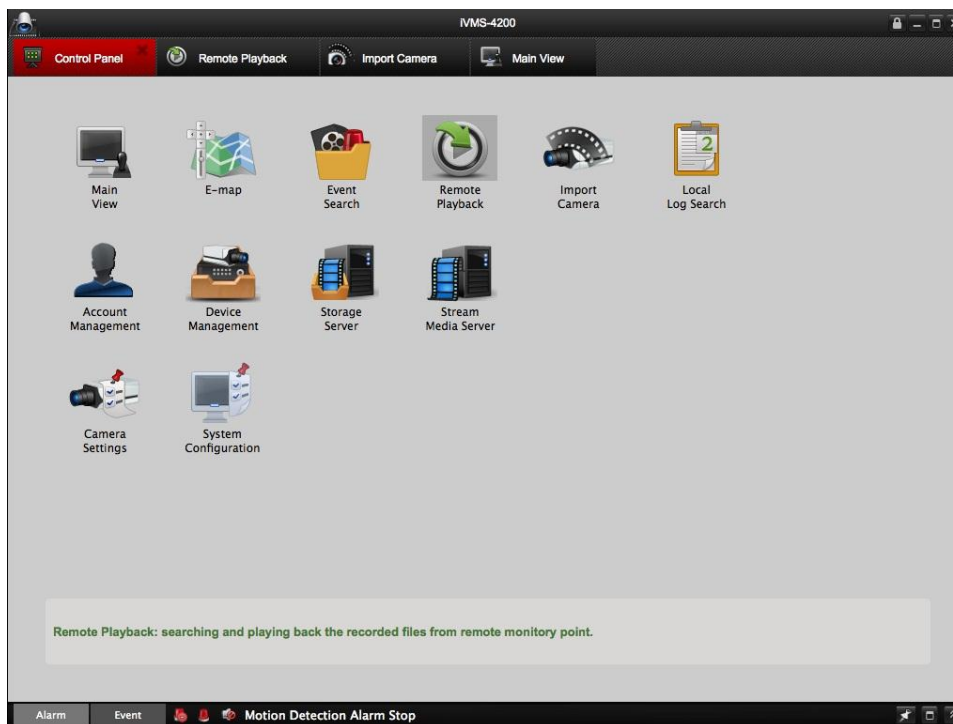
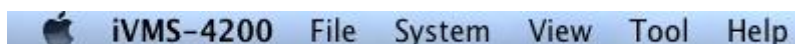



Figure 4.2 Control Panel

Menu Bar:



File	Open Captured Picture:	Enter the setting interface to browse the folder in the host PC for the exported captured picture file (s) and view the captured pictures.
	Open Video File:	Open the video player and browse the folder location of the exported video file (s), click  to browse the folder in the host PC of the record files. You can also capture pictures when playing of the video file.
	Open Log File:	Enter the Log File interface to browse the folder in the host PC for the exported log file(s).
System	Lock:	Lock the screen operation. You must log in after locking the system.
	Switch User:	Switch login user.
	System Configuration:	Enter the System Configuration interface.

	Import Configuration File:	Import client configuration file from your PC.
	Export Configuration File:	Export client configuration file to your PC.
View	1024*768:	Display window at size of 1024*768.
	1280*1024:	Display window at size of 1280*1024.
	Control Panel:	Enter Control Panel.
	Main View:	Enter Main View interface.
	E-map:	Enter E-map interface.
	Event Search:	Enter Event Search interface.
	Remote Playback:	Enter Playback interface.
Tools	Import Camera	Enter Import Camera interface.
	Camera Settings	Enter Camera Setting interface.
	Account Management	Enter User Account Management interface.
	Device Management	Enter Device Management interface.
	Storage Server Management	Enter Storage Server Management interface.
	Stream Media Server Management	Enter Stream Media Server Management interface.
	Device Arming Control	Quick setting for arming the device for alarms.
Help	Open Wizard	Wizard for Importing Device
	User Manual (F1)	Click to open the User Manual; you can also open the User Manual by pressing F1 on your keyboard.

There are 12 icons on the control panel, and their functions are described in the following table:

Operating Options	Main View	Viewing live video and playback record files and other operation (e.g., picture capture, recording, PTZ control, etc.).
	E-map	Managing and displaying E-Map and hot areas and spots; realize E-Map operation (e.g., operate map zoom in/out, view hot spot, display alarm, etc.)
	Event Search	Searching and playback of the event record files; realize playback operation.
	Remote Playback	Playback the recorded video and audio composite stream or only video files in the remote client.
	Import Camera	Adding, modifying or removing the camera groups; import/export of cameras.
	Local Log Search	Searching, viewing and backup of local logs

		(alarm, operation, system logs).
Management Options	Account Management	Adding, modifying or removing the user account parameters; assign operating permission to each user.
	Device Management	Adding, modifying or removing the DVR device; configuring parameters (e.g., network, alarm input/output, HDD, etc.) for the added DVR.
	Storage Server Management	Adding, modifying or removing the storage server; configuring parameters (e.g., record schedule, network, HDD, etc.) for the added storage server.
	Stream Media Server	Adding, modifying or removing the stream media server; configuring parameters (e.g., RTSP port, upper/lower limit, etc.) for the added stream media server.
Configuration Options	Camera Settings	Configuring camera parameters (e.g., image quality, record schedule, motion detection, etc.).
	System Configuration	Configuring the general parameters (e.g., saving path of files, alarm sound, Email, etc.).

Wizard for Importing Device

Purpose:

The main function of the iVMS-4200 is to manage network devices remotely. Thus the task on the top hierarchy is to register the device to the management list.

For the first time user and when there is no device added to the software for management, the wizard message box pops up to ask you whether you want to be guided for the basic operation of the software.

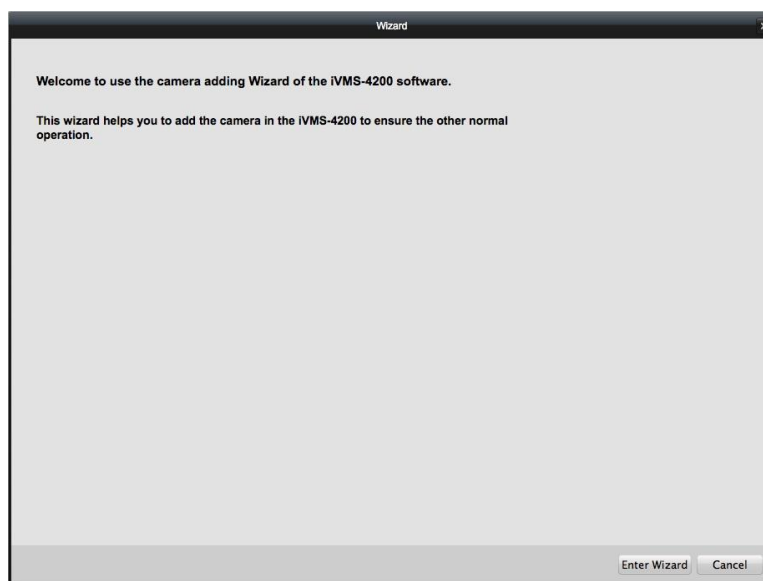
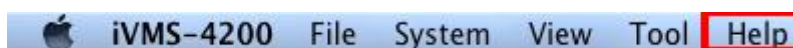


Figure 4.3 Wizard

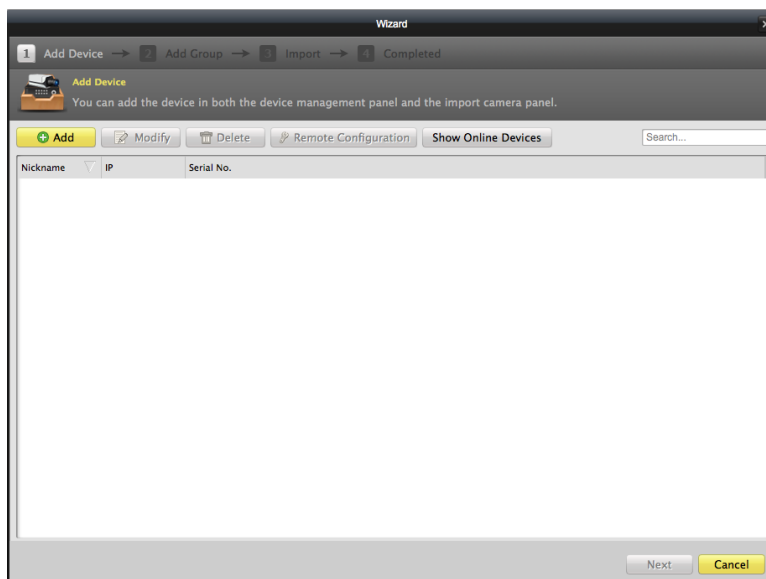
You can also use the wizard, click **Help** and **Open Wizard**.




Click **Enter Wizard** to start the wizard, or click **Cancel** to exit the wizard.

Steps:


1. According to the hint, click **Add** icon to add devices to the management list of the software.

**Figure 4.4 Enter Wizard**

2. Create a nickname for the device, enter the IP address and the port number, the user name, and the password of the device.
3. Click  to add the device.

If you add the device with a domain name, you can check the Private Domain Mode checkbox. And create a nickname, enter the domain name and port number, and enter the admin name and password of the device to add the device.

**Figure 4.5 Add Device**

You can also click  to show the device connected to the same Local Area Network.

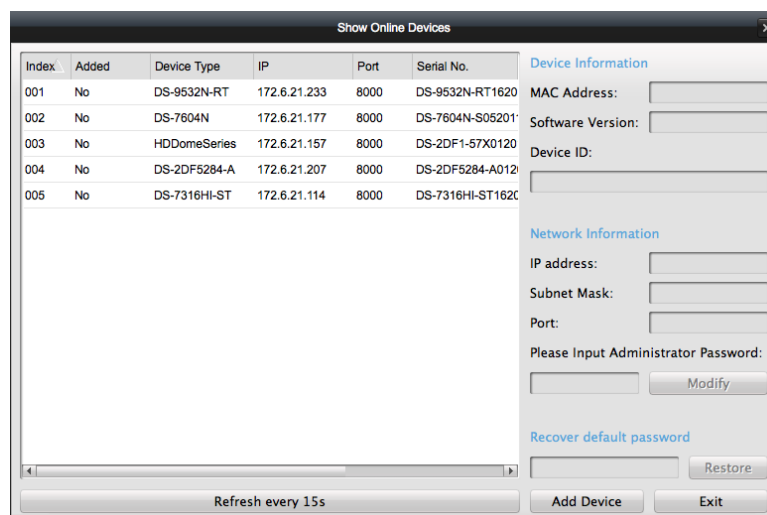


Figure 4.6 Show online Device

Adding the active online devices

Steps:

- 1) Select the device in the found device list, and the information of the device such as the MAC address the software version and the serial number is shown in the left part. The device information part can't be modified.
- 2) In the Network information area, you can modify the IP address the Subnet Mask and the Port number with entering the admin password of the device.
- 3) You can also recover the default password for the device, with the code provided by the authorized engineers.

4. Adding Camera Group

When adding a device, you can check the **Export to Group** checkbox to export the device you added to a certain camera group. By default, the name of the group is the same with the name of the device you just added.

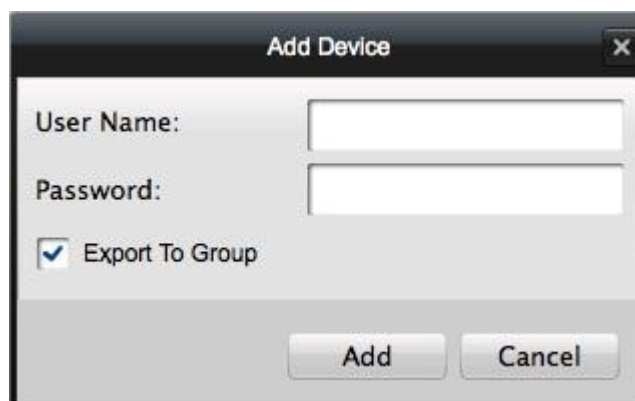


Figure 4.7 Add Device

If you want to add the camera to the group and the group name is by default the device name.

You uncheck the **Export to Group** checkbox and click Next page on the Wizard, to enter the adding group interface.

Click **Save** to add a new user. Click **Modify** to change the settings for the new user.

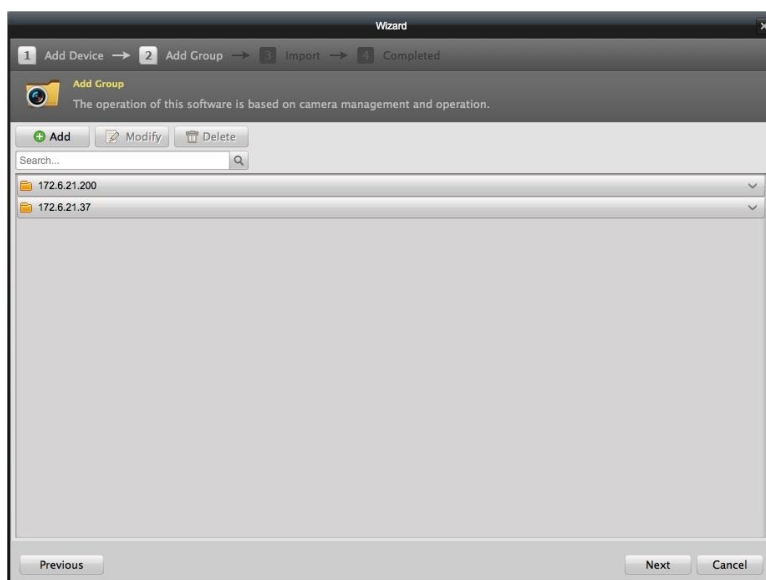


Figure 4.8 Show online Device

5. Click the **+ Add** on Group dialog box. Edit the name of group and then click **Yes** to save your settings. The added group will be displayed in the list.

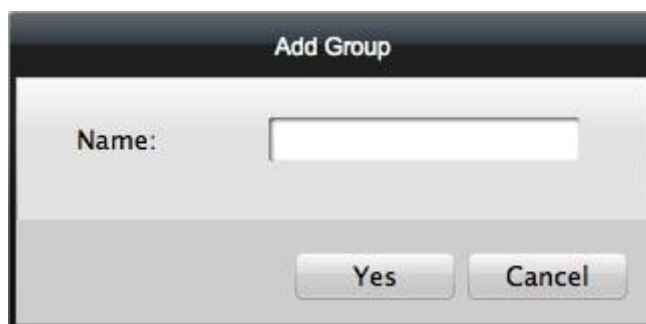


Figure 4.9 Add Group

6. Import Channels to Group

In the left area on the **Camera Import** interface, click to select the channels and then click **Import** button to import the selected channels to the Group on the right.

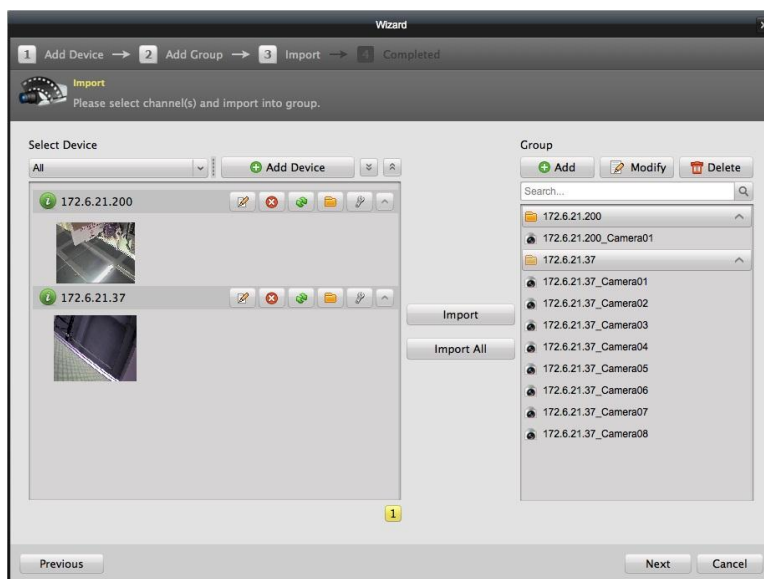


Figure 4.10 Select Camera to Group

You can drag and select multiple channels to import them to the group you added.

Notes:


- The devices to be added must be online currently.
- One channel can be added to different groups.
- Up to 256 groups can be added, and 64 channels can be added to each group, with a maximum of 1024 channels for all the groups totally.
- After importing the selected channels to the group, you can return to the control panel and then enter the Main View interface to get a live view of the added channels.

Starting Live View

Before you start:

A camera group is required to be defined before live view. And the group name is shown in the list on the left bar.

Entering the Live View Interface:

Click the main view icon  in the control panel, or click View -> Main View on the toolbar to enter the live view interface.

The main view interface is shown in the following figure:

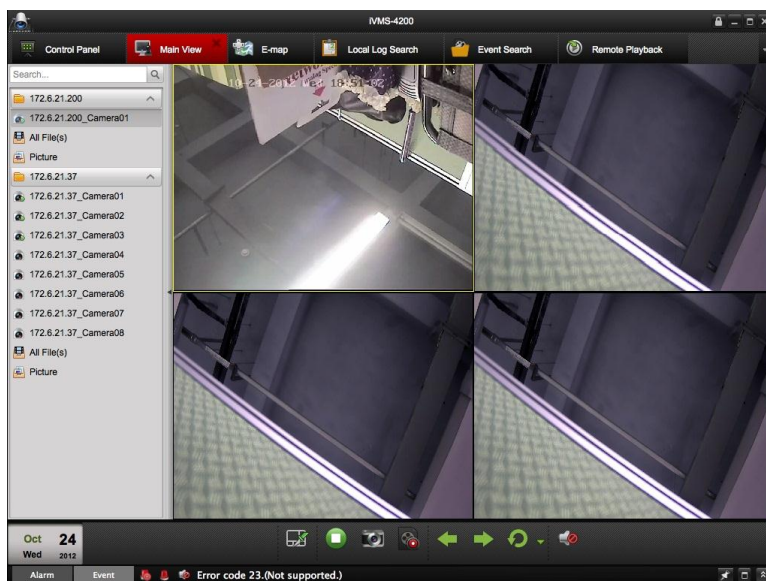


Figure 4.11 Main View


Camera Status:


Icon	Description
	Camera is online and works properly.
	Camera is offline.
	Camera is in live view.
	Camera is in recording status.

Main View Toolbar:

Figure 4.12 Main View Toolbar

Button	Name	Description
	Layout	Select different layout modes.
	Stop All	Stop the display of all the cameras.
	Manual Record	Start manual record for the selected channel, click again to stop.
	Previous and Next	Click to view previous and next camera.(Available only when auto-switch)
	Auto Switch	Start auto-switching the screen by cameras or by groups.
	Volume	Adjust the volume for live audio.

	Live Audio	Enable/disable live audio.
---	------------	----------------------------

Click , the following box pops up, you can choose the screen layout by clicking the certain icon.

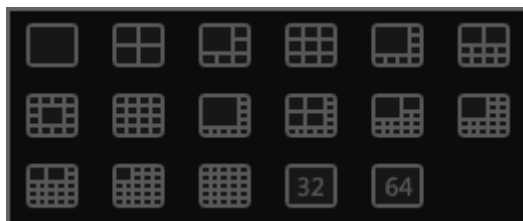


Figure 4.13 Screen Division

Local Playback

Based on the different storage modes, there are two playback modes: Local playback and remote playback.

Playback of Local Stored Files

Play back the video files created in local recording mode which is restored in your PC.

Steps:

1. Go to Main View panel and click the **All File(s)** icon to enter the Local Record Files interface. Select a camera and specify the start time and the stop time, and then click **Search** button to search the video clips. The matched video found will be listed in the display panel below.

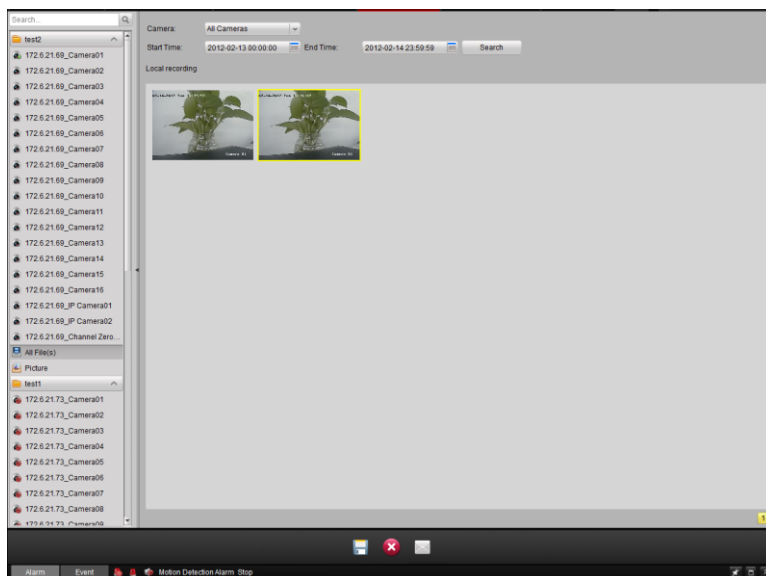


Figure 4.14 All File

2. Double click the record file to play it back.

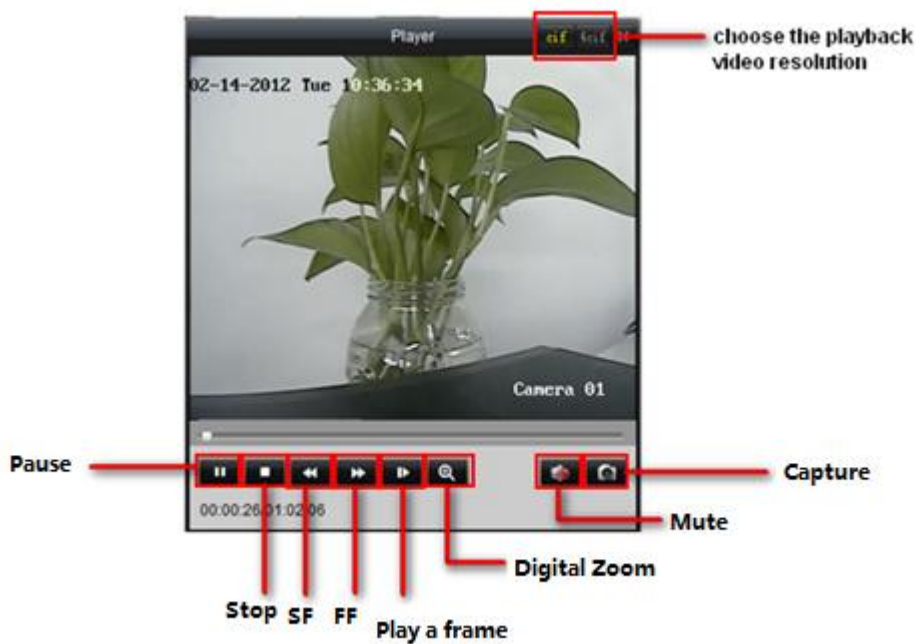





Figure 4.15 Playback Quick Window

You can click  button to save as the selected record file. You can click  to delete the clip from the panel, or click the  button to send the selected video clip by Email (The size of video clip must be less than 5M).

Note: To send the record file to an Email address, you must configure Email settings. For detailed instruction, see *The User Manual of iVMS-4200 Client Software*.

Instant Playback







1. Go to **Main View** panel, left-click a channel to enable the menu shown as follows, and click  button to start instant playback.



Figure 4.16 Left-click Menu

2. In instant playback interface, please click  button to start playback the first video files of current day; click  and  buttons to fast forward or slow forward. Click  to pause. And you can also left-click on the playback panel to show the menu with multiple playback function.
3. You may also use the timeline at the bottom of the Main View panel to adjust the playback progress. And the tag you just added is shown as a flag icon on the progress bar.

5. Exit System

Click **File** on the top menu and select **Exit**, or click  on the top right corner of the main interface, and then a confirmation dialog box pops up. Click **OK** to exit iVMS-4200 client software